



# Geography Homework Booklet



# MAP SKILLS

This booklet must be brought to every lesson

Name

Geography Set

## Map Skills

### Worksheet 1

1. Complete the passage below by drawing in the correct map symbol after the underlined word. You must research the actual OS map symbol for each feature to ensure the symbol you draw in is correct.

"I sat by the river just where it joined the lake . It was very wet and marshy . In the distance I could see a main road . There was a Public House and parking was available. Behind me there was a lovely orchard . What a pity that it was going to be knocked down and turned into a large Golf Course . I could also see a railway line . I decided my visit was now over and it was time to return to the coach station , just over the hill by the coniferous woods .

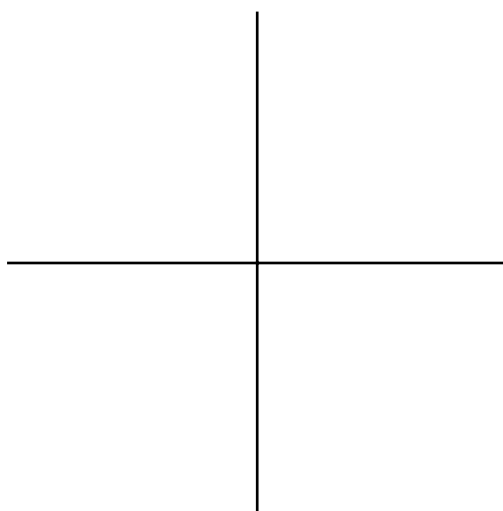
2. Now make up your own short story like the one above in the box below. You must include at least 10 map symbols in your writing and include the correct OS map symbol for each. You can include more than 10 if you like, but your story must make sense.

## The Compass Rose

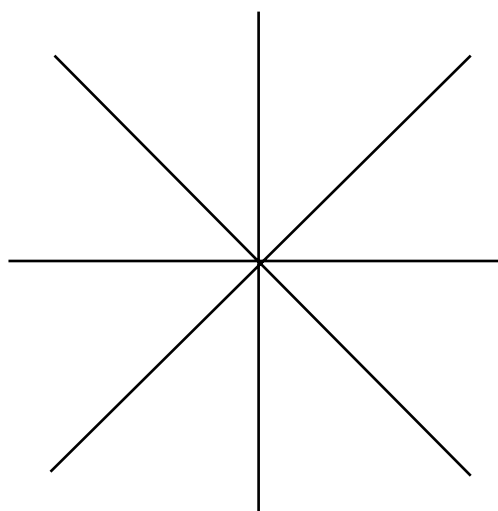
### Worksheet 2

1. Complete the two compass roses below, one is a four point compass and the other is an eight point compass.

Four Point Compass



Eight Point Compass



2. To help you remember the correct order of the four cardinal points always recite the following:

**NEVER**

**EAT**

**SHREDDED**

**WHEAT**

3. To help you remember the four cardinal points make up two rhymes of your own below:

N \_\_\_\_\_

E \_\_\_\_\_

S \_\_\_\_\_

W \_\_\_\_\_

N \_\_\_\_\_

E \_\_\_\_\_

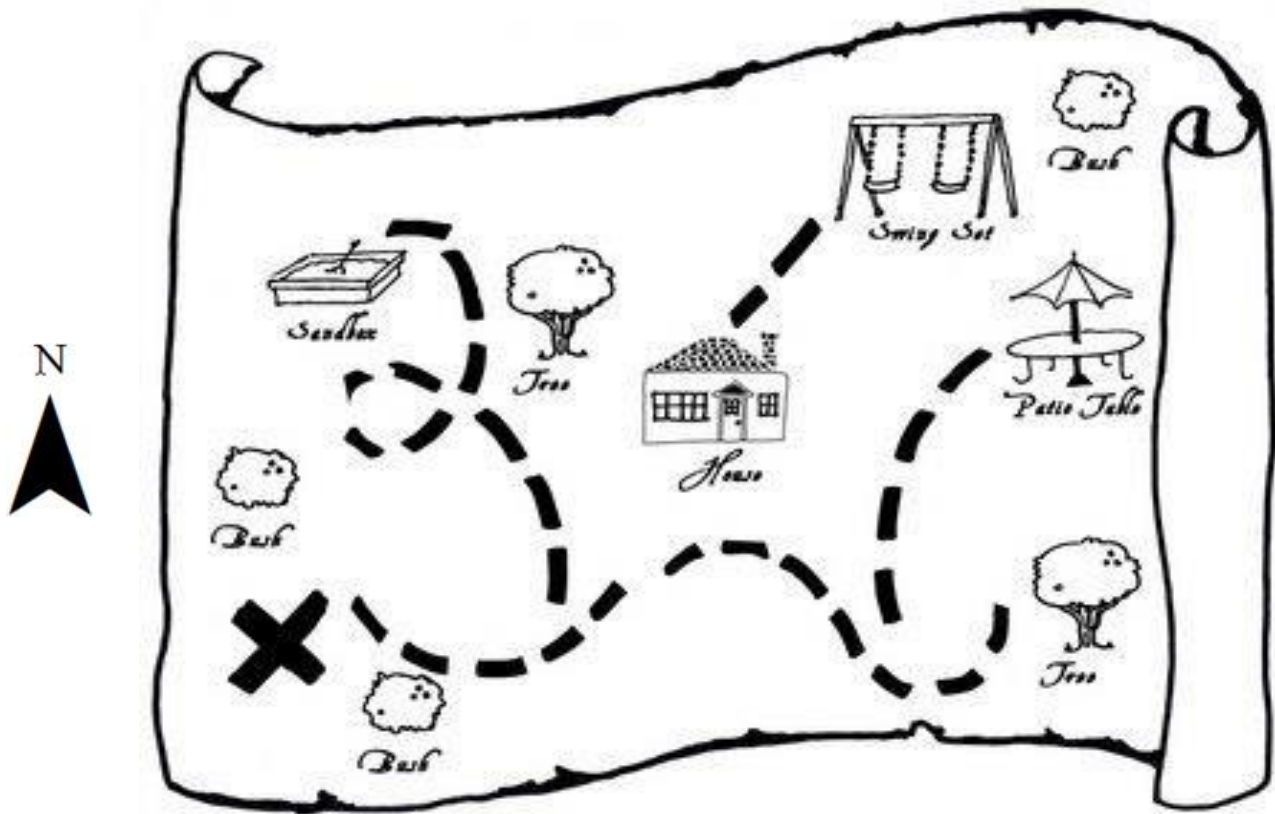
S \_\_\_\_\_

W \_\_\_\_\_

## Directions

### Worksheet 3

Study the map of a garden below and answer the following questions.



1. What is the name of the object **east** of the house? \_\_\_\_\_
2. If you walk in a **north east** direction from the house, what would be the first feature you would come across? \_\_\_\_\_
3. There are three bushes on the map what is each of their directions from the patio table? Bush 1 direction \_\_\_\_\_ Bush 2 direction \_\_\_\_\_ Bush 3 direction \_\_\_\_\_
4. Name the most **northerly** feature on the map: \_\_\_\_\_
5. What is the name of the object **south east** of the house? \_\_\_\_\_
6. If you walk in a **south west** direction from the swing set, what would be the first feature you would come across? \_\_\_\_\_
7. What direction is the sandbox from the swing set? \_\_\_\_\_

Compass Directions Word Game

Worksheet 4

Try to find the hidden geographical words in the puzzle. In each table directions have been given, follow them to spell out the words. Join the letters together as you follow the directions and complete the tables to find the words. The first starting arrow has been done for you.

For the **fourth word**, the word has been given, you need to fill in the directions.

First word starts here

Second word starts here

●	A	E	I	Q	P	N	I	U	C	●	
↓	D	T	T	U	O	F	I	S	N	O	V
	S	I	E	C	N	H	T	S	A	J	M
	D	R	S	M	Y	X	G	Z	M	P	O
	L	R	C	G	Q	D	E	K	J	L	H
	Z	K	X	H	L	B	K	X	E	B	W
	A	M	B	F	G	U	A	I	Y	H	N
	C	Y	T	R	J	P	O	V	E	S	P
	G	R	T	S	W	C	F	B	R	A	O
	O	W	E	H	E	S	O	G	E	R	D
●	N	P	W	Q	E	T	O	C	G	●	

Fourth word starts here

Third word starts here

First Word	
Direction	Letter
Go S	D
Go SE	
Go S	
Go NE	
Go E	
Go NW	
Go NE	
Go SE	
Go S	

Second Word	
Direction	Letter
Go W	
Go S	
Go SE	
Go SW	
Go NW	
Go W	
Go N	

Third Word	
Direction	Letter
Go W	
Go NW	
Go SW	
Go N	
Go NE	
Go E	
Go NE	
Go NW	
Go W	

Fourth Word	
Direction	Letter
Go	N
Go	O
Go	R
Go	T
Go	H
Go	W
Go	E
Go	S
Go	T

Four Figure Grid References

Worksheet 5

Using the grid below, find the four figure grid references for each of the points 'B' to 'T' and write them in the spaces provided. 'A' has already been done for you.

(Remember the rhyme 'along the corridor, then up the stairs')

A	36,22	F	K	P
B		G	L	Q
C		H	M	R
D		I	N	S
E		J	O	T

	36	37	38	39	40	41	42	
23	A		H	R	E	S		23
22	T	K		D		M		22
21	C		Q		L			21
20	O		G		B	N		20
19		F		J				19
18		P						18
17						I		17
	36	37	38	39	40	41	42	

## Design your own Holiday Island

## Worksheet 6

Use the grid below to design your own holiday island. You need to complete the grid numbers and include different features of your holiday island in the grid. Remember to write the name of the feature and draw the symbol in the key below. Also, write down the four figure grid reference of each feature and direction from the sun.

A 10x10 grid map. The columns are labeled 04, 05, 06, and the rows are labeled 37, 38, 39. A star icon is located at the intersection of column 07 and row 39.

[illegible]



## Map Symbols



### Worksheet 7

In each box, draw the correct symbol, which is used to represent the word on an ordnance survey map. You will need to research these on the internet.

Church or chapel	Cemetery
Main Road	Marsh
Motorway	Coniferous Wood
Footpath	Camp Site
Parking	Radio/ TV Mast
Information Centre	Buildings
Quarry	Rivers
Windmill	Phone box



## Six Figure Grid References

### Worksheet 8

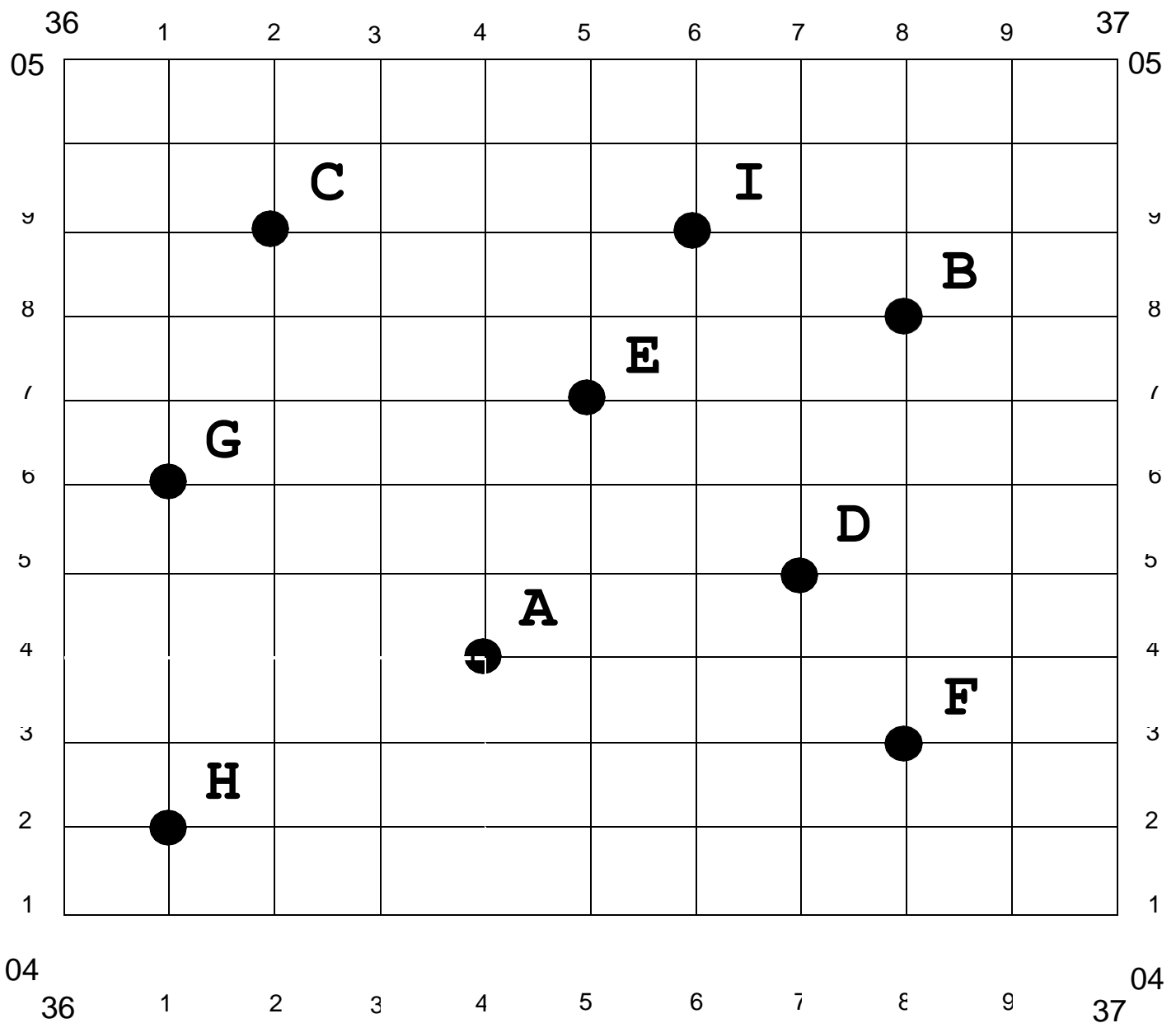
Give the six figure grid references for each point in the single grid square below.

(Remember the rhyme 'along the corridor, then up the stairs')

To find the six figure grid references for 'A' you should;

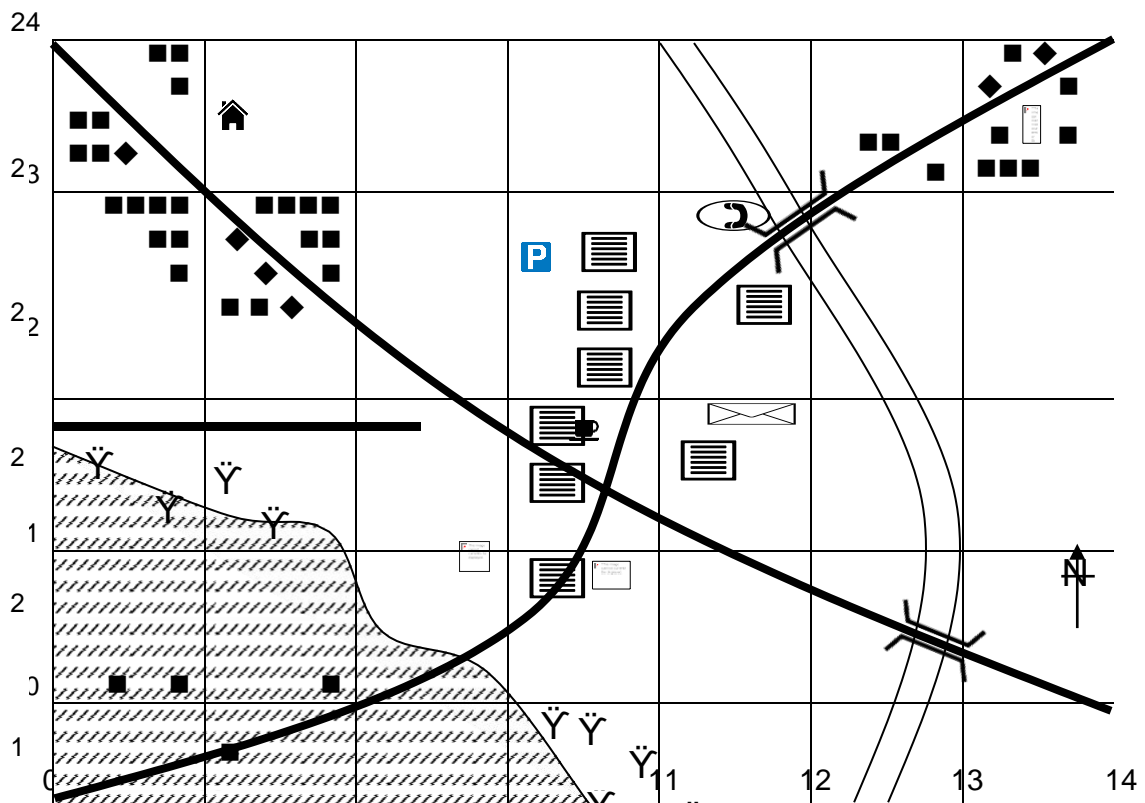
- Read the numbers across first - 36, then estimate the tenths - 4 (364)
- Read the numbers up second - 04, then estimate the tenths - 3 (043)    **Combine the two = 364,043**

A	364,043	D	G
B		E	H
C		F	I



# Six Figure Grid References

## Worksheet 9



Key/Legend					
	Houses		Office		Courthouse
	Church		School		Car park
	Post office		Bridge		Road
	Phone booth		Hospital		Café
	Palm tree		River		Farm land

1. a) What is the **four** figure grid reference of the phone booth? \_\_\_\_\_

b) What is the **six** figure grid reference of the phone booth? \_\_\_\_\_

2. What is the six figure grid reference of the following:

1. Hospital \_\_\_\_\_ e) Café \_\_\_\_\_

2. School \_\_\_\_\_ f) Courthouse \_\_\_\_\_

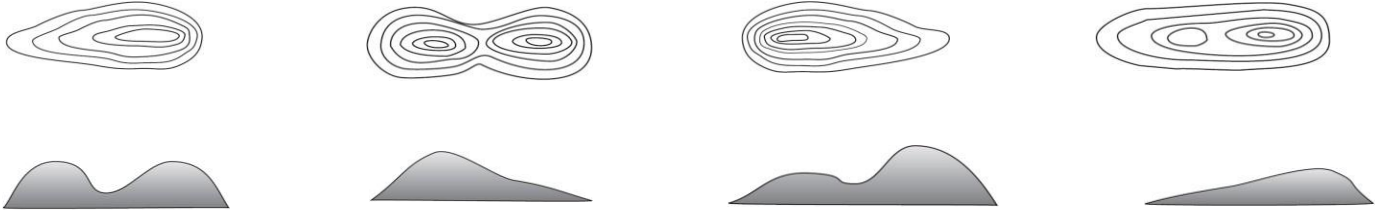
3. Post Office \_\_\_\_\_ g) Car park \_\_\_\_\_

4. Church \_\_\_\_\_

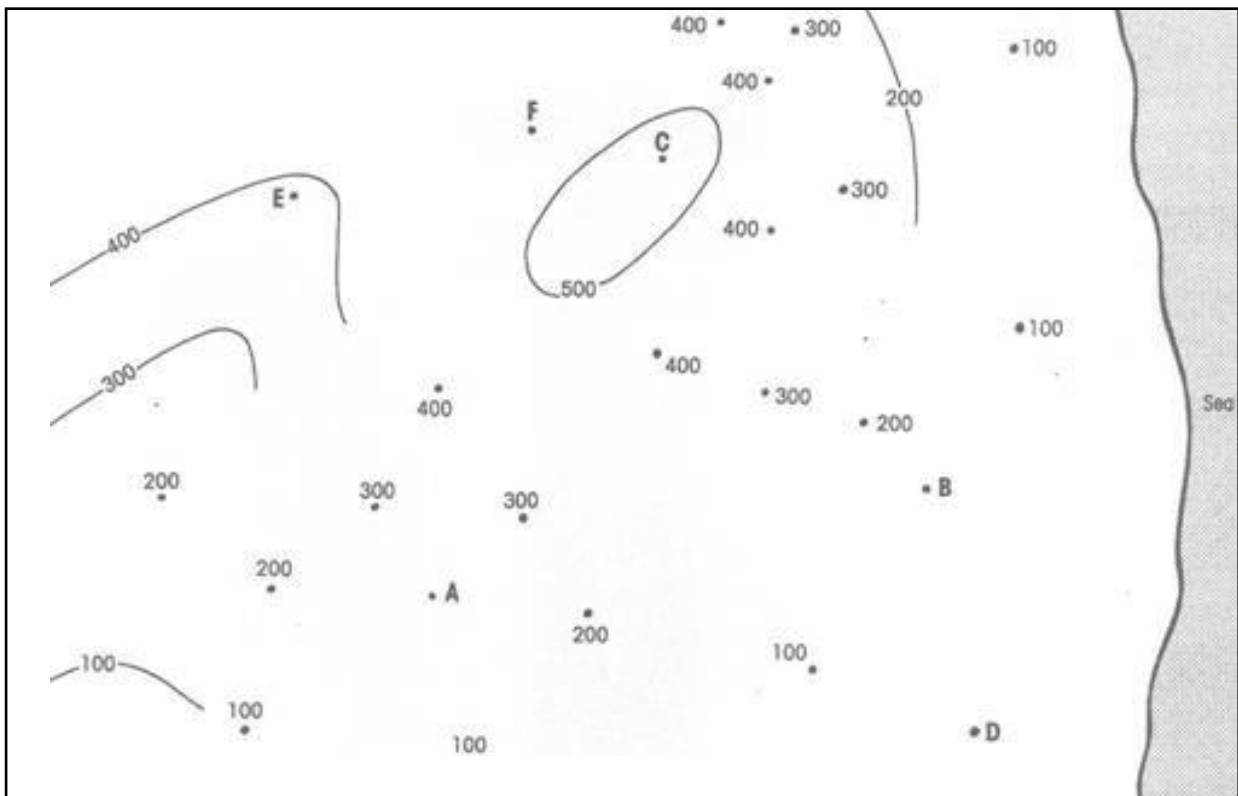
## Contour Lines

### Worksheet 10

1. Match the 3D image with the correct contour line image.



2. Link up the different contour line and shade the layers with the corresponding key below.



#### Key

More than 500m		Dark brown	200-300m		Yellow
400-500m		Light brown	100-200m		Dark green
300-400m		Orange	Less than 100m		Light green

3. What is the height of the land at each of the letters on the map?

- |              |             |
|--------------|-------------|
| i. A _____   | iv. D _____ |
| ii. B _____  | v. E _____  |
| iii. C _____ | vi. F _____ |