

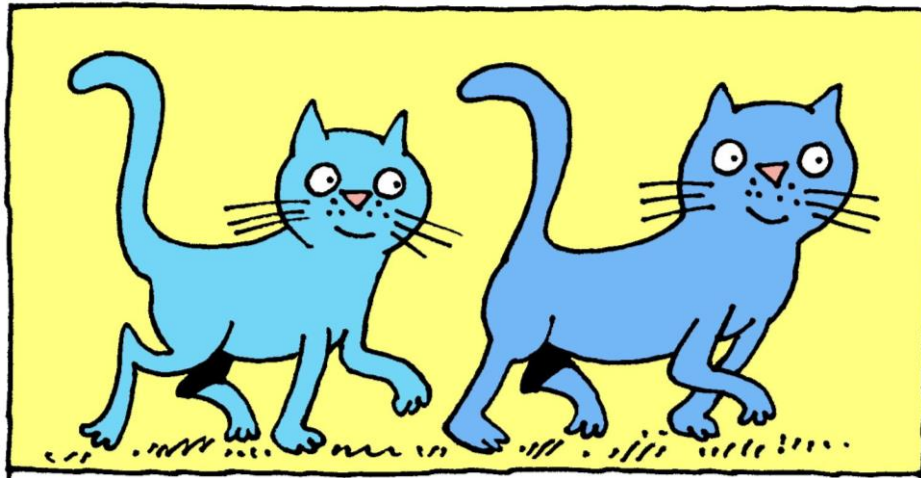
A tara na waqa levu ko Noa.

1



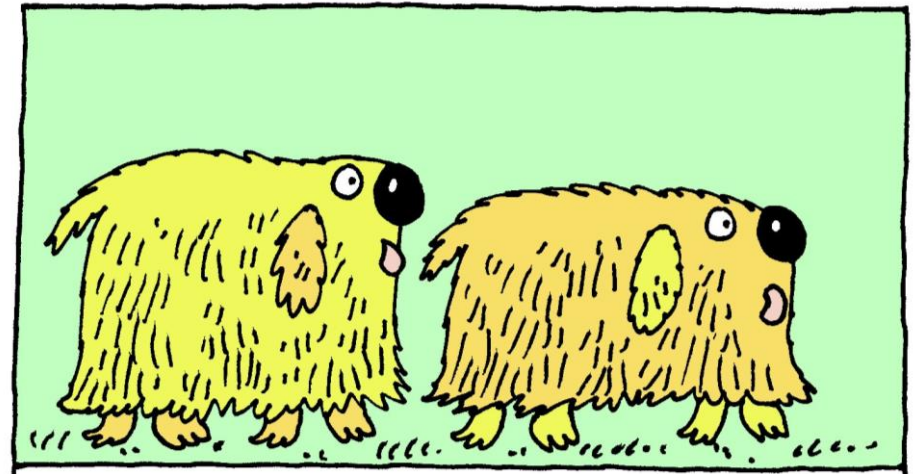
Na Kalou a vakauti ira na manumanu.

2



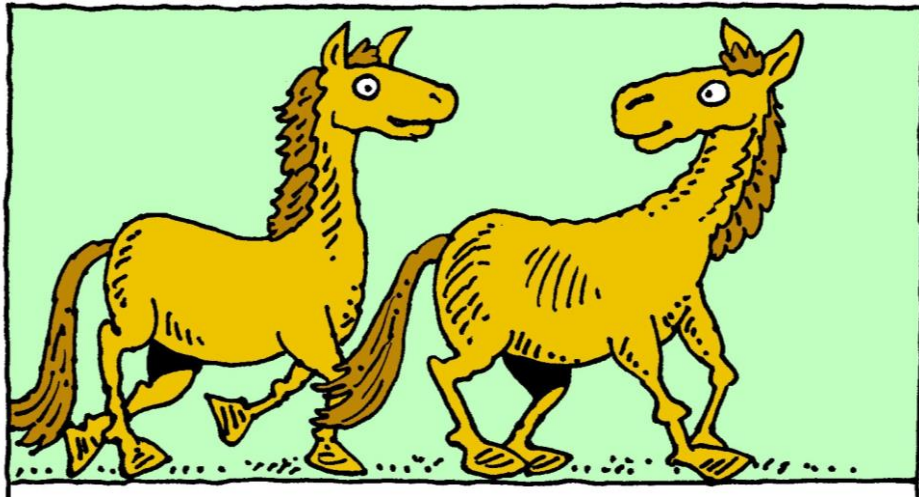
Rua na vusi e loma e loma ni waqa.

3



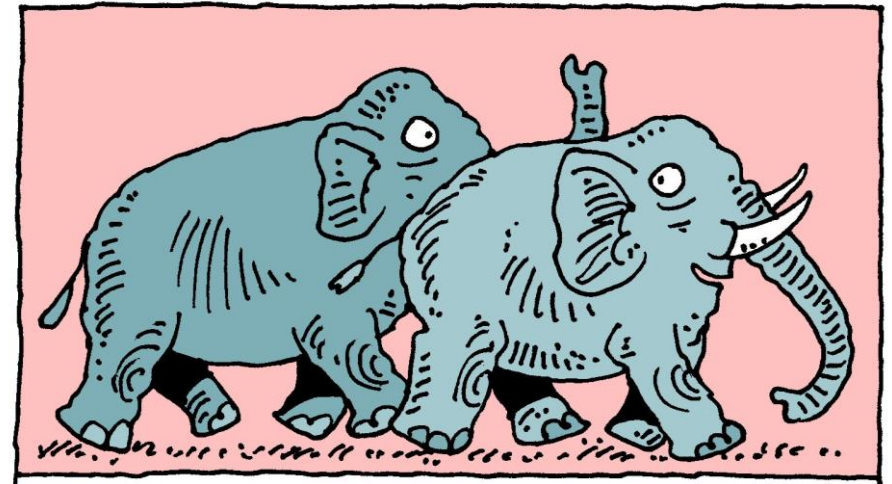
Rua na koli e loma e loma ni waqa.

4



Rua na ose e loma ni waqa.

5



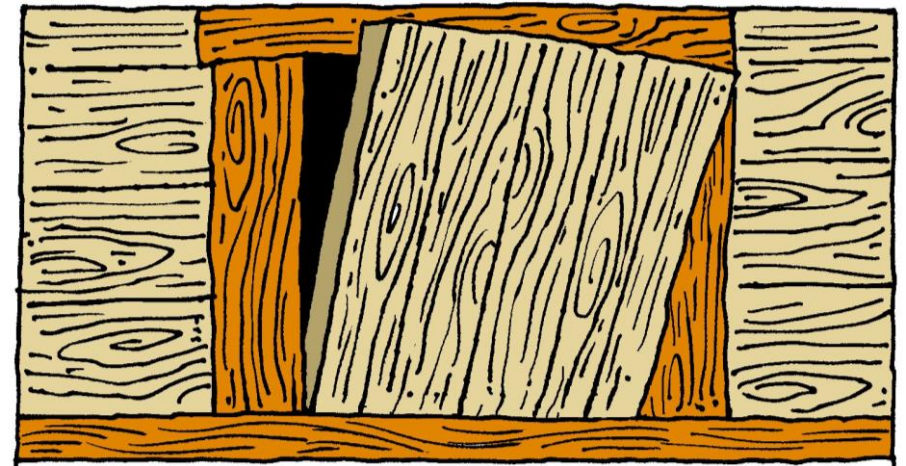
Rua na elefanti e loma ni waqa.

6



E ra curu kece e loma na manumanu.

7



Sa qai sogiota na katuba na Kalou.

8