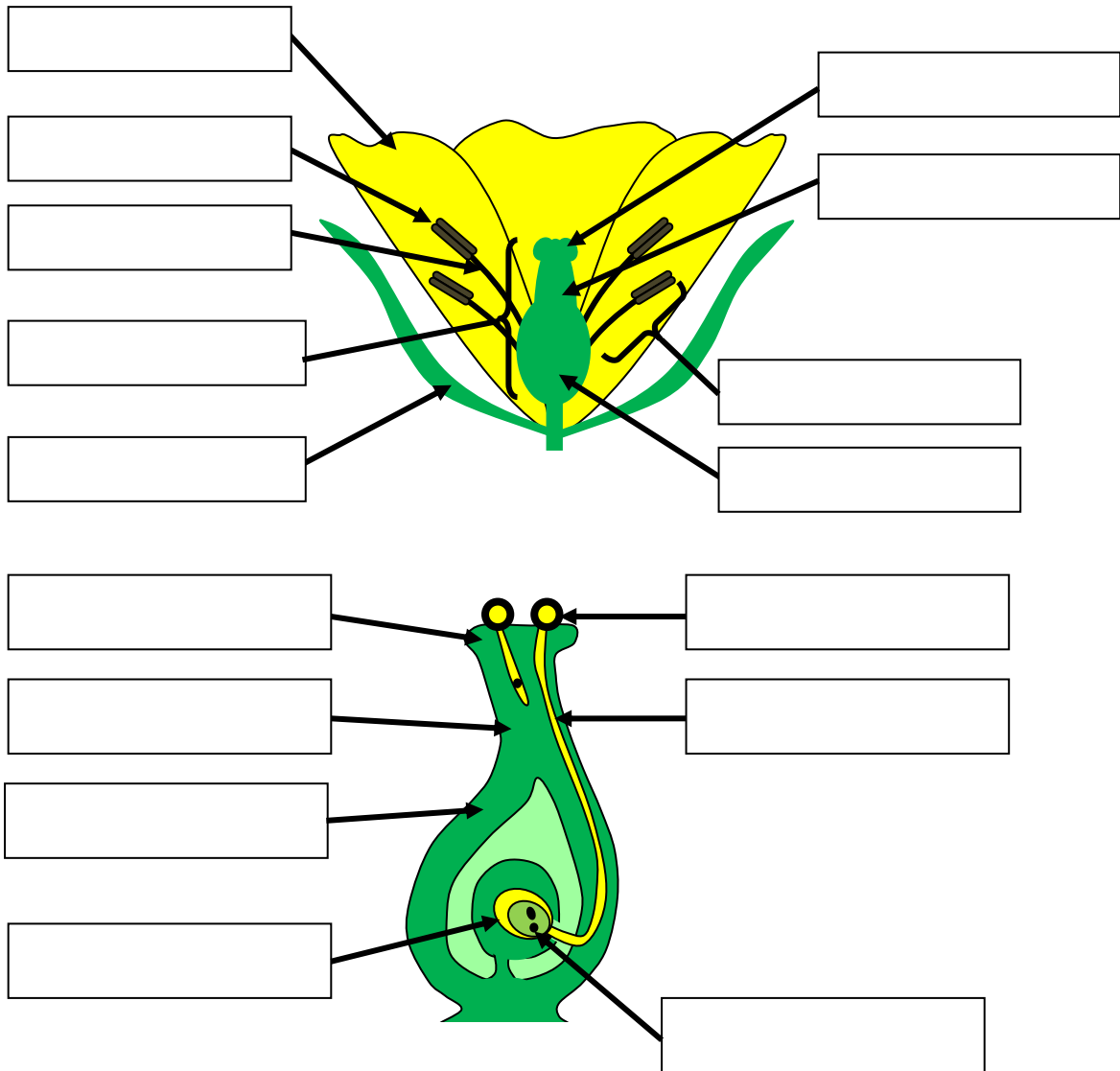


## Reproduction in Flowering Plants

1. Label the diagrams below



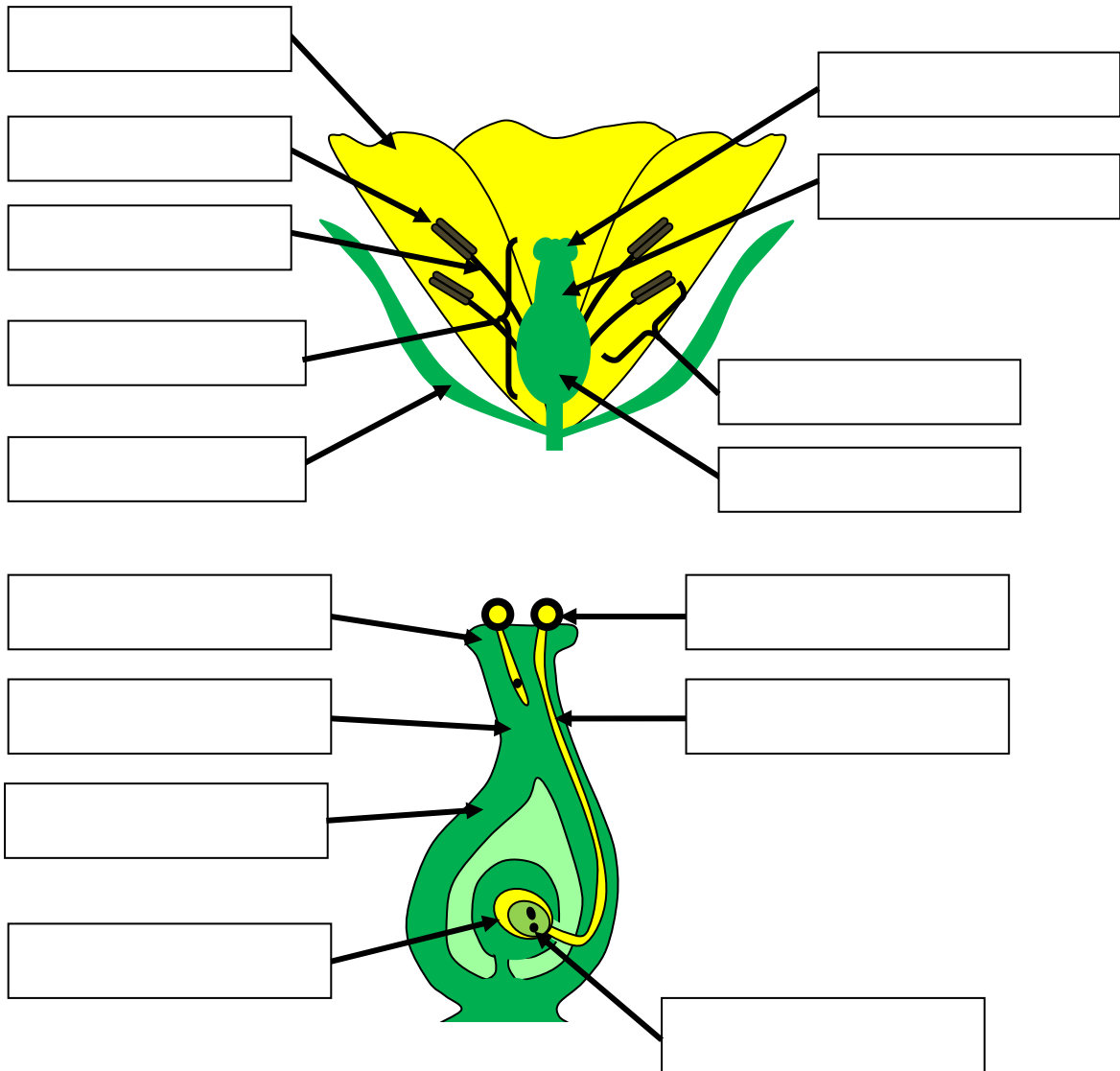
2. Which terms are defined below?

Term	Definition
	Coloured, flag-like structures which attract insects
	The male sex organ - made of the filament and the anther
	Part of the male sex organ - makes pollen
	A thin stalk that supports the anther
	The female sex organs - made of the stigma, the style and the ovary
	Collects pollen
	Connects the stigma to the ovary
	Found inside the ovary; contains the egg cell
	Grows out of the pollen grain and into the stigma: carries the pollen nucleus down to the egg cell

3. What happens at the moment of fertilization? \_\_\_\_\_  
 \_\_\_\_\_

## Reproduction in Flowering Plants

1. Label the diagrams below



2. Which terms are defined below?

Term	Definition
	Coloured, flag-like structures which attract insects
	The male sex organ - made of the filament and the anther
	Part of the male sex organ - makes pollen
	A thin stalk that supports the anther
	The female sex organs - made of the stigma, the style and the ovary
	Collects pollen
	Connects the stigma to the ovary
	Found inside the ovary; contains the egg cell
	Grows out of the pollen grain and into the stigma: carries the pollen nucleus down to the egg cell

3. What happens at the moment of fertilization? \_\_\_\_\_  
 \_\_\_\_\_